



FT Series
Firefighting Thermal Camera (V5.5.113)
Release Notes

Legal Information

© Hangzhou Microimage Software Co., Ltd.
All rights reserved.

About this Manual

The Manual includes instructions for using and managing the Product. Pictures, charts, images and all other information hereinafter are for description and explanation only.

The information contained in the Manual is subject to change, without notice, due to firmware updates or other reasons. Please find the latest version of this Manual at the HIKMICRO website

(www.hikmicrotech.com/).

Please use this Manual with the guidance and assistance of professionals trained in supporting the Product.

Trademarks



and other HIKMICRO's trademarks and logos are the properties of HIKMICRO in various jurisdictions. Other trademarks and logos mentioned are the properties of their respective owners.

LEGAL DISCLAIMER

TO THE MAXIMUM EXTENT PERMITTED BY APPLICABLE LAW, THIS MANUAL AND THE PRODUCT DESCRIBED, WITH ITS HARDWARE, SOFTWARE AND FIRMWARE, ARE PROVIDED "AS IS" AND "WITH ALL FAULTS AND ERRORS". HIKMICRO MAKES NO WARRANTIES, EXPRESS OR IMPLIED, INCLUDING WITHOUT LIMITATION, MERCHANTABILITY, SATISFACTORY QUALITY, OR FITNESS FOR A PARTICULAR PURPOSE. THE USE OF THE PRODUCT BY YOU IS AT YOUR OWN RISK. IN NO EVENT WILL HIKMICRO BE LIABLE TO YOU FOR ANY SPECIAL, CONSEQUENTIAL, INCIDENTAL, OR INDIRECT DAMAGES, INCLUDING, AMONG OTHERS, DAMAGES FOR LOSS OF BUSINESS PROFITS, BUSINESS INTERRUPTION, OR LOSS OF DATA, CORRUPTION OF SYSTEMS, OR LOSS OF DOCUMENTATION, WHETHER

BASED ON BREACH OF CONTRACT, TORT (INCLUDING NEGLIGENCE), PRODUCT LIABILITY, OR OTHERWISE, IN CONNECTION WITH THE USE OF THE PRODUCT, EVEN IF HIKMICRO HAS BEEN ADVISED OF THE POSSIBILITY OF SUCH DAMAGES OR LOSS. YOU ACKNOWLEDGE THAT THE NATURE OF THE INTERNET PROVIDES FOR INHERENT SECURITY RISKS, AND HIKMICRO SHALL NOT TAKE ANY RESPONSIBILITIES FOR ABNORMAL OPERATION, PRIVACY LEAKAGE OR OTHER DAMAGES RESULTING FROM CYBER-ATTACK, HACKER ATTACK, VIRUS INFECTION, OR OTHER INTERNET SECURITY RISKS; HOWEVER, HIKMICRO WILL PROVIDE TIMELY TECHNICAL SUPPORT IF REQUIRED.

YOU AGREE TO USE THIS PRODUCT IN COMPLIANCE WITH ALL APPLICABLE LAWS, AND YOU ARE SOLELY RESPONSIBLE FOR ENSURING THAT YOUR USE CONFORMS TO THE APPLICABLE LAW. ESPECIALLY, YOU ARE RESPONSIBLE, FOR USING THIS PRODUCT IN A MANNER THAT DOES NOT INFRINGE ON THE RIGHTS OF THIRD PARTIES, INCLUDING WITHOUT LIMITATION, RIGHTS OF PUBLICITY, INTELLECTUAL PROPERTY RIGHTS, OR DATA PROTECTION AND OTHER PRIVACY RIGHTS. YOU SHALL NOT USE THIS PRODUCT FOR ANY PROHIBITED END-USES, INCLUDING THE DEVELOPMENT OR PRODUCTION OF WEAPONS OF MASS DESTRUCTION, THE DEVELOPMENT OR PRODUCTION OF CHEMICAL OR BIOLOGICAL WEAPONS, ANY ACTIVITIES IN THE CONTEXT RELATED TO ANY NUCLEAR EXPLOSIVE OR UNSAFE NUCLEAR FUEL-CYCLE, OR IN SUPPORT OF HUMAN RIGHTS ABUSES.

IN THE EVENT OF ANY CONFLICTS BETWEEN THIS MANUAL AND THE APPLICABLE LAW, THE LATTER PREVAILS.

TABLE OF CONTENTS

1	Introduction	1
1.1	Version information	1
1.2	More information	1
1.3	Upgrade device.....	1
1.3.1	Upgrade device with USB.....	1
1.3.2	Upgrade device via HIKMICRO Viewer	2
2	New features	3
2.1	Palettes updates	3
2.1.1	Smooth mode is added	3
2.1.2	Palettes management is available and palettes configurations can be memorized	3
2.1.3	Palettes threshold is available	3
2.2	Settings lock is added	3
2.2.1	Set password	4
2.2.2	Change password.....	4
2.2.3	Reset password	4
2.3	Center temperature alarm is supported	4
2.4	Display settings and more settings menus are added.....	5
2.5	New functions are supported in HIKMICRO Viewer.....	5
2.6	Added temperature measurement parameters	5
2.7	Auto sleep mode is available	5
3	Optimizations	7
4	FAQ on Upgrade.....	8
4.1	Why my PC failed to detect the camera as a USB drive?	8
4.2	What should I do when my PC notifies power surge on the USB port?	8
4.3	What should I do when my PC notifies USB device not recognized?.....	8
4.4	What should I do if my PC notifies the USB drive has a problem to be fixed?	9

1 Introduction

The HIKMICRO FT Series is a high-performance firefighting thermal camera designed for firefighters to observe in total darkness and smoke, helping to save lives, protect property, and keep firefighters safe. Features like object details enhancement, easy-to-navigate buttons and a working temperature range of up to 260°C(500°F) help you work effortlessly in harsh environments. 8 color palettes for you to choose from satisfy most application scenarios.

This document introduces new features and optimizations in V5.5.113 of FT Series.

1.1 Version information

Item	Description
Firmware Version	V5.5.113 build260509
Models	FT31

1.2 More information

- Mobile Client: HIKMICRO Viewer (only for the camera models with Wi-Fi and Hotspot)
<https://www.hikmicrotech.com/en/industrial-products/hikmicro-viewer-software/>
- PC Client for analysis and report: HIKMICRO Analyzer
<https://www.hikmicrotech.com/en/industrial-products/hikmicro-analyzer-software/>
- PC Client for USB Cast Screen: UVC Client
<https://www.hikmicrotech.com/en/industrial-products/uvc-client/>
- Welcome to visit our website and see more Compatibility Lists.
<https://www.hikmicrotech.com/en/support/download-center/compatibility/>

1.3 Upgrade device

1.3.1 Upgrade device with USB

Before upgrading your camera, make sure:

- Fully charge your camera.

- Auto Power-off function is turned-off to avoid accidental suspension during upgrading.
1. Download new firmware from our website (<https://www.hikmicrotech.com/en/industrial-products/b20s-handheld-thermal-imager/>), and save it to your PC.
 2. Use supplied USB cable (USB-C to USB-A) to connect the device to PC.
 3. Open the detected disk on your PC.
 4. Unzip the firmware, and copy and paste the .dav file to the root directory of the disk.
 5. Disconnect the device from PC and reboot the device to start upgrading automatically. The upgrading lasts several minutes, please wait for the process to complete.

1.3.2 Upgrade device via HIKMICRO Viewer

Before You Start

Scan the QR code below to download and install HIKMICRO Viewer on your phone.



Android




iOS

1. Launch HIKMICRO Viewer on your phone.
2. Upgrade the device. You can choose one of the following paths:
 - In the home screen, tap **Device Upgrade > Check for Updates**.
 - In the home screen, tap **Device Info > Device Upgrade > Check for Updates**.

2 New features

2.1 Palettes updates

2.1.1 Smooth mode is added

 Smooth mode is applicable to firefighting, and life searching and rescue. The advantage of this mode is that it can display the moving picture more smoothly when the target frequently changes.

Go to **Settings > Manage Palettes** to set smooth mode as commonly used palettes.

2.1.2 Palettes management is available and palettes configurations can be memorized

Added the **Manage Palettes** function, allowing users to configure commonly used palettes modes. Go to **Settings > Manage Palettes** to set your preferred palettes.

After configuring commonly used palettes in **Manage Palettes**, the device can remember your configuration. Upon the next restart, the palettes settings will not be erased.

2.1.3 Palettes threshold is available

Palettes threshold of basic mode and smooth mode can be set. The palettes threshold is a temperature value to control the range of palette display. When the surface temperature of the target reaches or exceeds the set threshold, the thermal imager will enable palettes for the corresponding area, while areas below the threshold are typically displayed in gray.

Go to **Settings > Palette Threshold** to set your preferred threshold.

2.2 Settings lock is added

After configuring preferred settings, users can enable the settings lock to prevent changes caused by accidental touches or other reasons.

2.2.1 Set password

When enabled, users can configure and modify a 4-digit settings lock password (number only). The password is required to enter the settings menu each time.

Go to **Settings > More Settings > Settings Lock** and turn on the button.

2.2.2 Change password

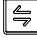
Users can choose to change password.

Go to **Settings > More Settings > Settings Lock > Change Password**.

2.2.3 Reset password

If the password is forgotten, it can be reset, but this action will erase all user configurations. Proceed with caution.

Steps

In live view interface, hold  to confirm restore device to factory settings.

2.3 Center temperature alarm is supported





Set the alarm rules and the device will alarm when the center temperature triggers the rule.



Note

- The center temperature point is enabled by default.
 - If the center temperature point is turned off, it must be enabled again to use the alarm function.
-

Steps

1. In live view interface, press  and  together to enter imager menu.
2. Go to **Settings > Alarm Settings**.
3. Press  to enable the alarm.
4. Select **Alarm Threshold** to set the threshold temperature.
5. Press  to save and return to the live view interface. When the center temperature exceeds the alarm temperature, the temperature value in the lower right corner turns red.

2.4 Display settings and more settings menus are added

Display settings menu is added in settings. It includes thermal readout, the highest (Max), lowest (Min) and center (Gen) temperature points, time and date configuration.

More settings menu is added in settings. It includes screen lock, settings lock, language, etc.



2.5 New functions are supported in HIKMICRO Viewer

The camera can be connect to the HIKMICRO Viewer via Wi-Fi or hotspot. Use the app to control the device for capturing, recording, switching image modes, and selecting your preferred palette.



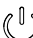
2.6 Added temperature measurement parameters

Emissivity and distance directly affect the measurement accuracy. You can now adjust the emissivity and distance in settings.

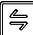
Steps

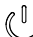
1. In live view interface, press  and  together to enter menu.
2. Go to **Settings**.

Emissivity: Set the emissivity of the target.

3. Go to Emissivity settings.
4. Press  to select an emissivity based on the scenario.
5. Optional: Select **Custom** to set the emissivity value, press or hold  to increase the value.
6. Press  to save and exit.

Distance: Set the distance between the target and the device.


7. Go to select Distance settings.
8. Press or hold  to increase the value.

Press  to save and exit.

2.7 Auto sleep mode is available

The camera supports auto sleep mode and changes the operation in different scenarios.

Release Notes

- Enable sleep mode: Go to **Settings** > **More Settings** > **Auto Sleep**. Set the time of auto sleep, the imager will enter sleep mode automatically to save power.
- Cancel sleep mode before countdown: Press any button to cancel entering sleep mode in live view interface.
- Wake up from sleep mode: Press  to wake up the camera.

3 Optimizations

- Change the default emissivity value to 0.98.
- Palettes coloring in rescue mode starts from 65°C.
- Palettes can be switched during the recording process.

4 FAQ on Upgrade

4.1 Why my PC failed to detect the camera as a USB drive?

Check the following items:

- Use a good quality USB-C to USB-A cable to connect your PC to your camera. The supplied cable is recommended. Normally, a cable should be able to charge a camera and transfer data.
- Select **USB Drive** as the USB mode.
- Keep the camera powered on.

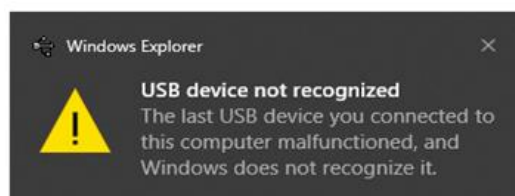
4.2 What should I do when my PC notifies power surge on the USB port?



Check the following items:

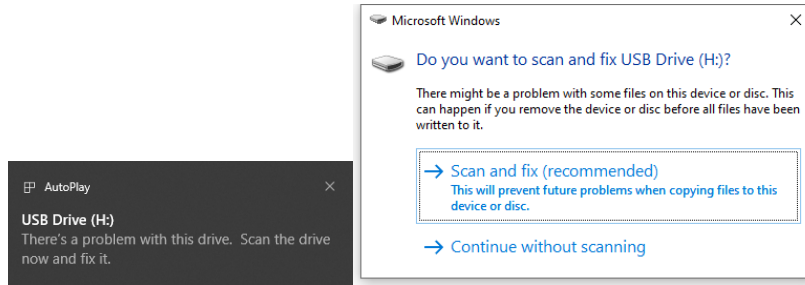
- When you are looking for an adapter of USB-C to USB-A, please choose an unpowered hub. A powered hub such as Surface Dock Station is not compatible.
- If you are using a built-in USB PowerShare port in your PC, please try another port.

4.3 What should I do when my PC notifies USB device not recognized?



In most cases, it does not affect use. You can just ignore the prompt and find the detected USB drive in **This PC**. If the USB drive is not found, please try to Restore/Initialize the camera.

4.4 What should I do if my PC notifies the USB drive has a problem to be fixed?



Some Windows computers will scan a USB drive when it is connected, and show the error. Click scan and fix, Windows will confirm the drive is fine and connect to it. You can also skip scanning and find the detected USB drive in **This PC**, which does not affect use in most cases.



HIKMICRO

See the World in a New Way