

Thermal Network Bullet Camera & Turret Camera

V5.5.338 build 251202

Release Notes

(2025-12-15)

1) Basic Information

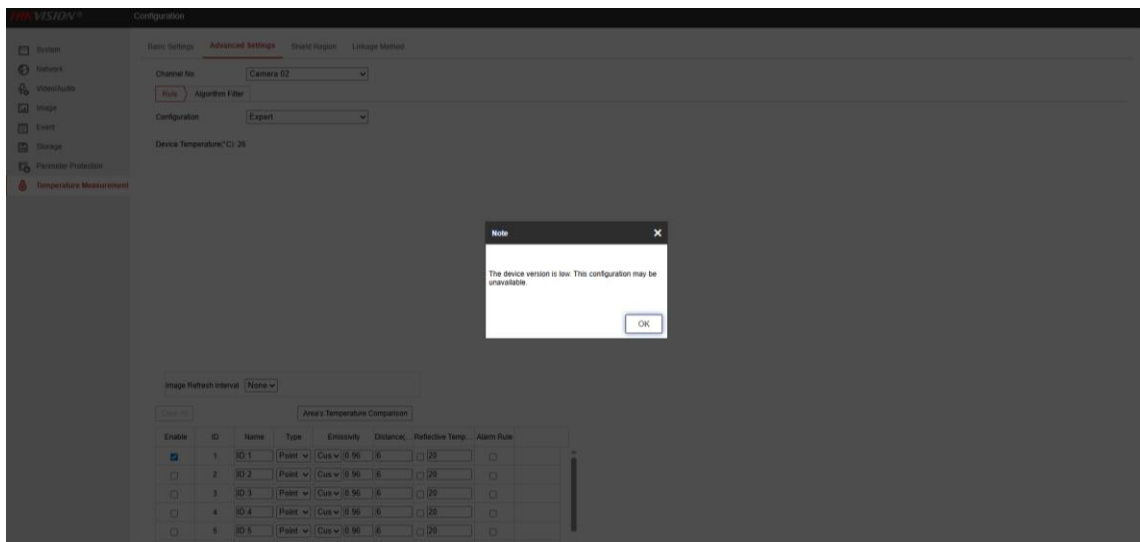
Firmware Version	V5.5.338 build 251202
------------------	-----------------------

2) New & Optimized Features

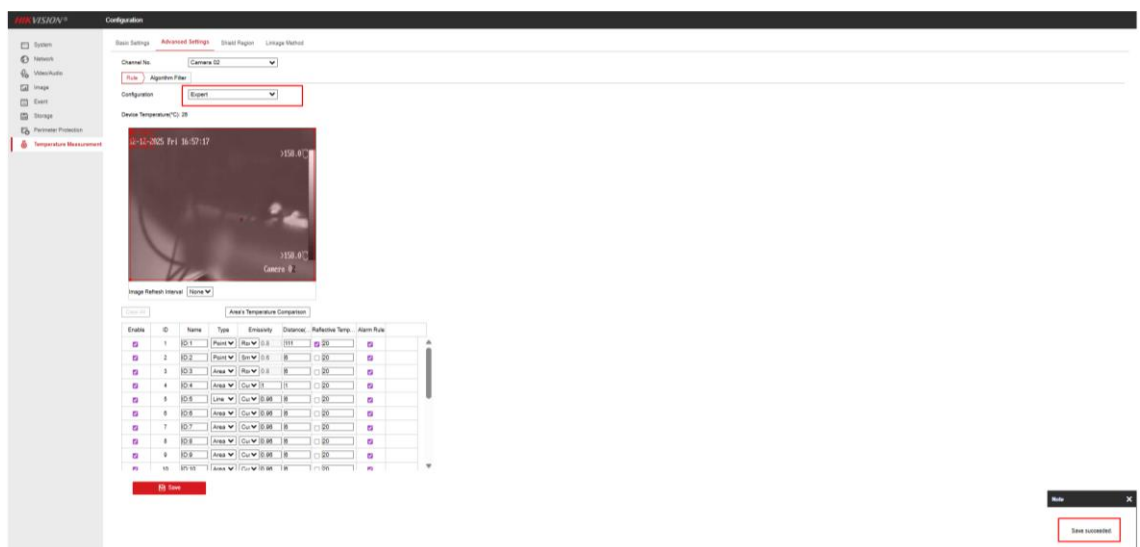
This release primarily focuses on fixing known issues:

1. Fixed the issue where HPP could not configure thermal camera expert temperature measurement.

- Before:

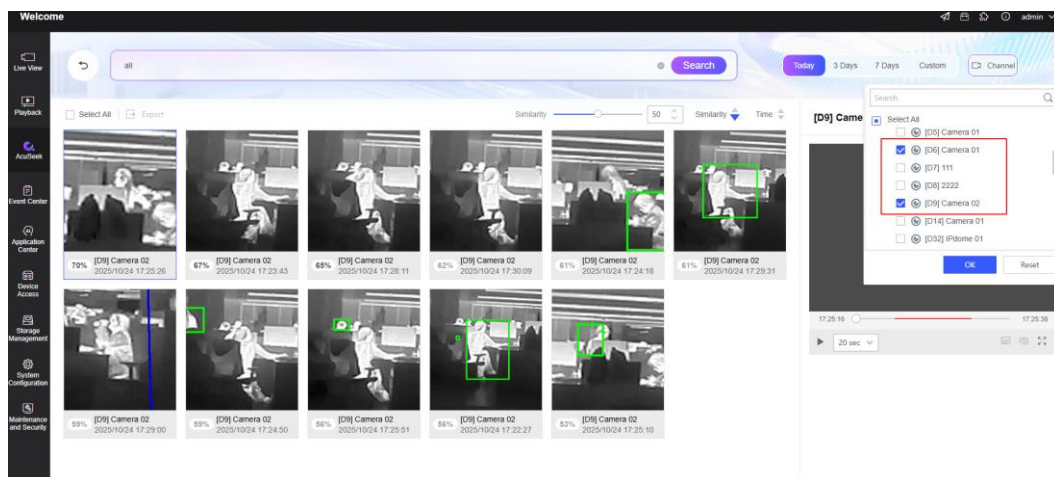


- After:

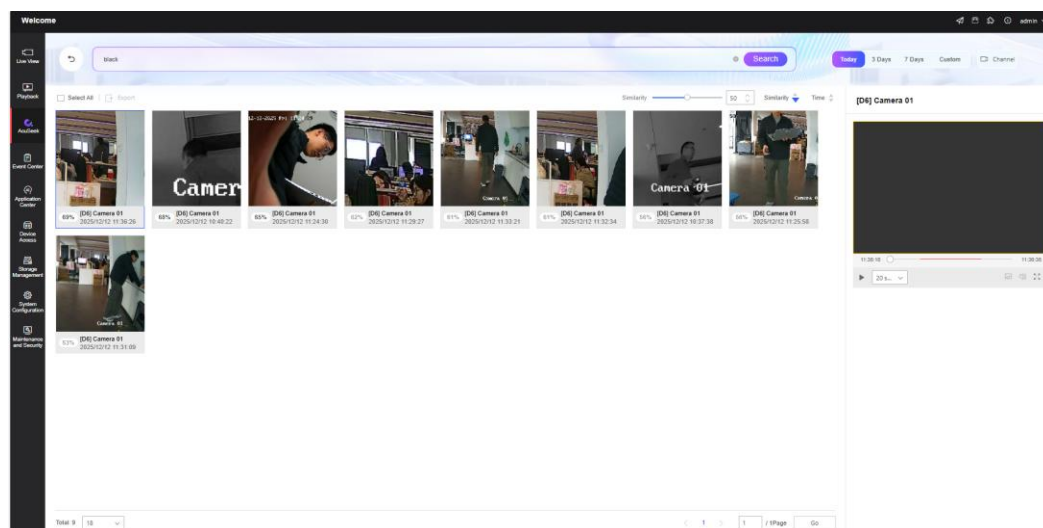


2. Optimized the linkage logic of Acuseek and Acusearch. Now Acuseek and Acusearch only work on the device's visible light channel.

- Before:



- After:



3. Fixed the issue where NVR could not activate the main switch for Shield region in perimeter protection.

4. Fixed the issue where temperature measurement rules could not be configured on some Windows 11 systems.

5. Fixed the occasional initialization failure issue in self-learning calibration.

6. Fixed the abnormal triggering issue when the alarm output was in the normally closed state.

7. Fixed the white screen issue in the Web video window under the following environments:

- Windows 11 (22H2 or later) + Chrome 139
- Windows 11 Pro + Edge 139

3) Models included

HM-TD2638-4/G0/T1Y	HM-TD2638-8/G0/T1Y	HM-TD2638-10/G0/T1Y	HM-TD2638-15/G0/T1Y
HM-TD2638-25/G0/T1Y	HM-TD2638-35/G0/T1Y	DS-2TD2638-4/G0/T1Y	DS-2TD2638-8/G0/T1Y
DS-2TD2638-10/G0/T1Y	DS-2TD2638-15/G0/T1Y	DS-2TD2638-25/G0/T1Y	DS-2TD2638-35/G0/T1Y
HM-TD2638T-4/G0/T1Y	HM-TD2638T-8/G0/T1Y	HM-TD2638T-10/G0/T1Y	HM-TD2138-10/G0/T1Y(lite)
HM-TD2138-15/G0/T1Y(lite)	HM-TD2138-25/G0/T1Y(lite)	HM-TD2138-35/G0/T1Y(lite)	HM-TD2668-10/G0/T1Y
HM-TD2668-15/G0/T1Y	HM-TD2668-25/G0/T1Y	HM-TD2668-35/G0/T1Y	DS-2TD2668-10/G0/T1Y
DS-2TD2668-15/G0/T1Y	DS-2TD2668-25/G0/T1Y	DS-2TD2668-35/G0/T1Y	HM-TD2668-10/G0/T1Y(lite)
HM-TD2668-15/G0/T1Y(lite)	HM-TD2668-25/G0/T1Y(lite)	HM-TD2668-35/G0/T1Y(lite)	HM-TD2168-5/G0/T1Y
HM-TD2168T-5/G0/T1Y	HM-TD2668T-10/G0/T1Y	DS-2TD2568T-50/G0/T1Y	DS-2TD2568T-15/G0/T1Y
HM-TD2568T-5/G0/T1Y	HM-TD2568T-15/G0/T1Y	HM-TD2618-3/G0/T1A	HM-TD2618-7/G0/T1A
HM-TD2618-10/G0/T1A	HM-TD1218-2/G0/T1A	HM-TD1218-3/G0/T1A	HM-TD1218-7/G0/T1A
HM-TD2628-3/G0/T1A	HM-TD2628-7/G0/T1A	HM-TD2628-10/G0/T1A	DS-2TD2628-10/G0/T1A
HM-TD1228-2/G0/T1A	HM-TD1228-3/G0/T1A	HM-TD1228-7/G0/T1A	HM-TD2628T-3/G0/T1A
HM-TD2628T-7/G0/T1A	HM-TD2628T-10/G0/T1A	HM-TD1228T-2/G0/T1A	HM-TD1228T-3/G0/T1A
HM-TD1228T-7/G0/T1A			