

AD21

Professional Tools For Detecting Indoor Leaks

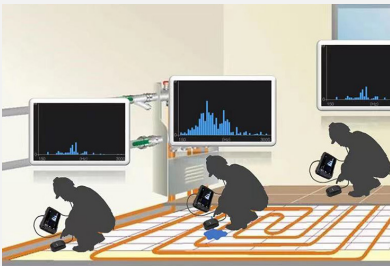


Two Inspection Modes For Fast Leak Location

Quick Inspection Mode

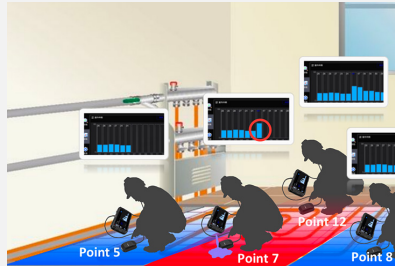
Quickly locate the scope of the leakage point, through real-time digital and image changes for investigation.

With three display modes: figure, bar chart and line chart, suitable for different users' habits.



Inspection Mode

Inspection mode can detect the floor and wall. Record the values of up to 12 areas. After finishing the inspection, AD21 will automatically determine the suspected leakage points, making the leakage detection work more accurate.



Four Indoor Band Pass Filters

Through intelligent algorithms, AD21 is optimized for different sound bands in indoor leak detection scenarios, picking the right gear to quickly locate the location of the leak.

-  Indoor Low-frequency **150 to 3000Hz**
-  Indoor Mid-frequency **3000 to 6000Hz**
-  Indoor High-frequency **4500 to 7500Hz**
-  Indoor All-pass **150 to 7500Hz**



Easy To Use, More Flexible Setting

7"LCD Touch Screen Display & Dual Wave Wheels



High Quality Listening Experience

High-quality Noise-canceling Headset & Hearing Protection



Durable And Rechargeable Batteries

Rugged & Durable Design with 11 Hrs. Continuous Runtime

APPLICATIONS



Leak Under The Floor



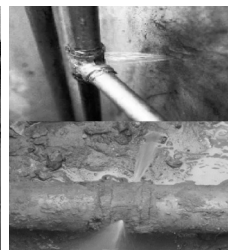
Heating Pipes/
Underfloor Heating
Pipe Leaks



Water Supply
Pipe Leakage/
Water Pipe Leakage



Roofs And Walls,
Water Seepage In
The Ground



Fire Sprinkler
System

WHAT'S IN THE BOX



- Main Unit
- Handheld Sensor
- Pick-up Sensor
- Handle grip
- Headset
- Power Supply for Battery Charger
- International Use Plugs (US/EU/UK/AU) for Power Supply (x4)
- USB 2.0 A to USB Type-C Cable
- Pouch
- Quick Start Guide
- Calibration Certificate

Model No		AD21
Acoustic	Frequency Range	150~7500Hz
	Signal Noise Ratio	60dB
	Sensitivity	-29dB,70mv/g
	Sensor	hand held sensor, Pick-up sensor
	Band Pass Filters	Indoor low-frequency 150Hz to 3000Hz Indoor high-frequency 4500Hz to 7500Hz
Image Display	Display	1024 × 600 Resolution, 7"LCD Touch Screen
	Screen Brightness	Manual/Auto
General	Storage Media	Built-in EMMC(4GB)
	Audio Storage Capacity	Approx. 20 hours
	Working Temperature Range	-10 °C to 50 °C (14 °F to 122 °F)
	Drop Test Height	1.2 m(3.93 ft.)
	Battery Type	Rechargeable Li-ion Battery
	Battery Operating Time	≥11h
	Battery Charging Time	3h to 90%,6h to full charge
Protection Level	Main Unit:IP40; Hand held sensor:IP54; Pick-up sensor:IP66;	

HIKMICRO Thermography

hikmicro_thermography

HIKMICRO Thermography

info@hikmicrotech.com

support@hikmicrotech.com

HIKMICRO

