

# B SERIES

Compact and easy-to-use thermal camera for daily operation



**SuperIR™**



VISIT OUR WEBSITE

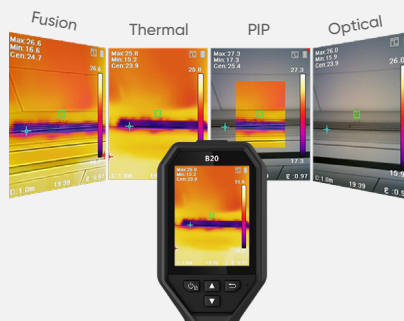
### Enhanced Thermal Clarity with SuperIR

Powered by HIKMICRO SuperIR image enhancement technology, it upscales the resolution of captured thermal images to 320 x 240 (76,800 Pixels).



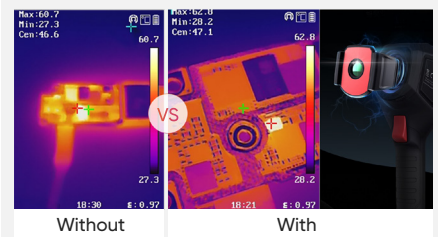
### Multiple Image Modes

Fusion, Thermal, PIP and Visual modes to suit your preferred view. (B11, B20 only)



### Innovative Macro Mode

Using a clip-on macro lens, the B series cameras can see details as small as 500 microns and allow you to take accurate temperature readings on small objects, such as components on printed circuit boards or assemblies.



### 3.2" Color LCD

View the details of your images on the large, class-leading LCD screen.



### Efficient Temperature Measurement

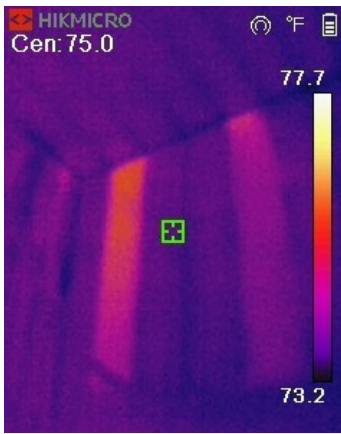
Track the temperature of Center, Hot, Cold spot and 3 Custom spots automatically.



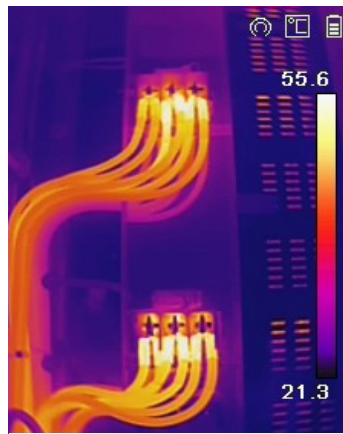
### Wi-Fi Connectivity

Connect to mobile devices via built-in Wi-Fi and the HIKMICRO Viewer App to quickly share your images.

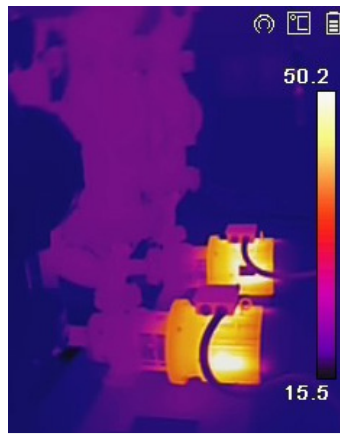
## APPLICATIONS



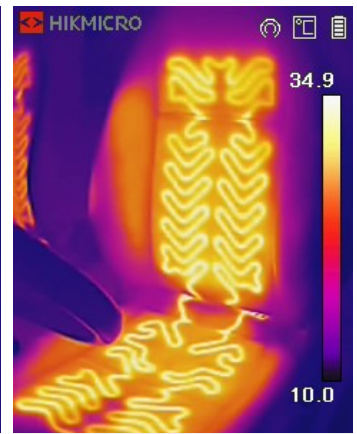
Building Envelope



Electrical Cabinet

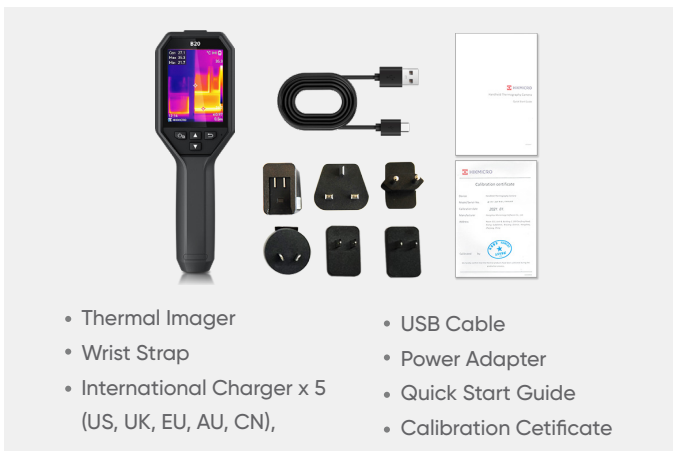


Mechanical Inspection



Automotive Inspection

## WHAT'S IN THE BOX



- Thermal Imager
- Wrist Strap
- International Charger x 5 (US, UK, EU, AU, CN),
- USB Cable
- Power Adapter
- Quick Start Guide
- Calibration Certificate

## OPTIONAL ACCESSORIES



– B Series Macro Lens –  
HM-B201-MACRO



– E/B Series POUCH –  
HM-B01-POUCH

Camera Highlights		B11	B21L	B20
Infrared Image	IR Resolution	192 × 144 (27,648 pixels)	256 × 192 (49,152 pixels)	
	SuperIR	Yes, on Captured Thermal Images		
	NETD	<0.04°C / NETD< 40mK		
	Image Frequency	25 Hz		
	Field of View (FOV)	27.8° × 37.2°	37.2° × 50.0°	37.2° × 50.0°
	Focus Mode	Focus Free		
Image Display	Visual Camera	1600 × 1200 (2 MP)	N/A	1600 × 1200 (2 MP)
	Image Modes	Thermal/Visual/PIP/Fusion	Thermal	Thermal/Visual/PIP/Fusion
	Display	240 × 320 Resolution, 3.2" LCD Screen		
Measurement and Analysis	Object Temperature Range	-20 °C to 550 °C (-4°F to 1022°F)		
	Accuracy	Max (±2°C/3.6°F, ±2%), for the ambient temp. 15°C to 35 °C (59 °F to 95 °F) and object temp. above 0 °C (32°F)		
Data Storage and Communication	Storage Media	Built-in 16 GB flash memory		
	File Format	Radiometric JPEG		
	Storage Capacity	Up to 90,000 images		
General	Durability	2m (6.56 ft) drop test, IP54		
	Wi-Fi	802.11 b/g/n (2.4GHz)		
	Led Flashlight	Yes	N/A	Yes
	Laser Pointer	N/A	Yes	N/A
	Battery Operating Time	Approx. 6 hours		