

SP SERIES

Ultra-high performance and maximum flexibility



SP40, SP40H
without viewfinder

Super**SCENE+**

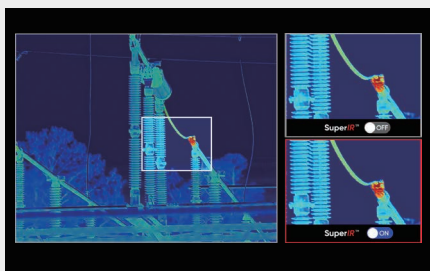


VISIT OUR WEBSITE

Super**IR**[™]

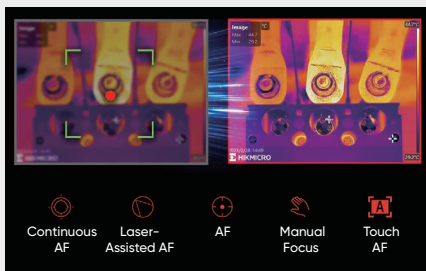
Powered by HIKMICRO SuperIR image enhancement technology, it upscales thermal images resolution when recording video with 30 Hz fast image frequency and capturing photos.

- SP40/H: from 480 × 360 up to 960 × 720
- SP60/H: from 640 × 480 up to 1280 × 960
- SP100H: from 1040 × 832 up to 2080 × 1664
- SP120H: from 1280 × 1024 up to 2560 × 2048



One-second fast focusing

Support for **5 focus modes** (Laser-Assisted AF, Continuous AF, AF, Manual Focus, Touch AF) with a fast focus speed of **1 second** to match your workflow, optimize image clarity, and ensure measurement accuracy.



Flexible Rotating Lens and Screen

The 90° rotating screen and the 180° rotating lens design help to easily view the area around, between, above, or below the target. Keeping a safe distance allows for equally flexible inspections.



Up to 2200°C
Temperature Range



1-Tap Level & Span



Extensive Range of
Interchangeable Lenses



Embedded
Laser Distance Meter



Radiometric Video Analysis

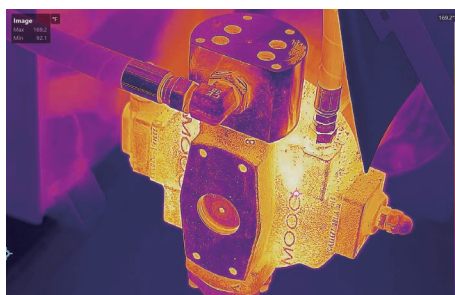


Interchangeable Battery
System

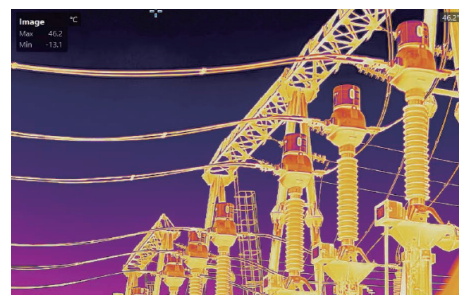
APPLICATIONS



High temperature



Industrial



Power Industry

WHAT'S IN THE BOX



- Thermal Imager
- Hand Strap
- Neck Strap
- Rubber Viewfinder Cap (SP60/60H/120H Only)
- Camera Lens Caps
- Dismountable and Rechargeable Li-ion Batteries (x2)
- Power Supply for Battery Charger
- Two-bay Battery Charger
- International Use Plugs (US/EU/UK/AU) for Power Supply
- USB 2.0 A to USB Type-C Cable
- Mini HDMI to HDMI Cable
- USB Type-C Cable to USB Type-C Cable
- Hard Carrying Case
- Calibration Certificate
- Quick Start Guide
- 128GB Micro SD card
- Dust-free Cloth

OPTIONAL ACCESSORIES



Tripod Adapter



SP Series Pouch

Model No	SP40	SP40H	SP60	SP60H	SP100H	SP120H
IR Resolution	480 × 360 (172,800 Pixels)		640 x 480 (307,200 Pixels)		1040 × 832 (865,280 pixels)	1280 × 1024 (1,310,720 pixels)
SuperIR	Yes, on captured images					
SuperScene+	-		Electrical Panel, PCB Inspection			-
FOV (H × V)	6° / 9° / 18.7° / 37.3°		50.0° / 24.8° / 12° / 8°		50.0° / 25° / 12° / 7.9°	
Frequency	30Hz					
NETD	< 30 mK (@ 30 °C, F#=1.0)				< 20 mK (@ 30 °C, F#=1.0)	
Visual Camera	3264 × 2448 (8 MP)				4096 × 3036 (13 MP)	
Image Mode	Thermal/Visual/Fusion/PIP/Blending					
Display	1280 × 720 Resolution, 5" LCD Touch Screen				1920 × 1080 Resolution, 5.1" OLED Touch Screen	
Temperature Range	Range 1: -40°C to 150°C Range 2: 0°C to 650°C	Range 1: -40°C to 150°C Range 2: 0°C to 650°C Range 3: 300°C to 2200°C	Range 1: -40°C to 150°C Range 2: 0°C to 650°C	Range 1: -40°C to 150°C Range 2: 0°C to 650°C Range 3: 300°C to 2200°C	Range 1: -40~150°C Range 2: 100~650°C Range 3: 300~2200°C	
Focus Mode	Laser Assisted AF/Continuous AF/AF/Manual Focus/Touch AF					
Wi-Fi	Yes					
LED Flashlight	Yes					
Laser Distance Meter	Yes					
1-Tap Level & Span	Yes					
Video Recording	Yes					
Macro Lens	20µm/ 50µm Macro Lens				-	
Operation Time	4 Hours x 2, Removable Batteries					
Extendable Memory Card	Extendable 128 GB Micro SD Card					
Interchangeable Lenses	Yes					
Inspection Route	Yes					
GPS & Compass	Yes					
Viewfinder	-		Yes			
Rotating Lens & Screen	Yes					