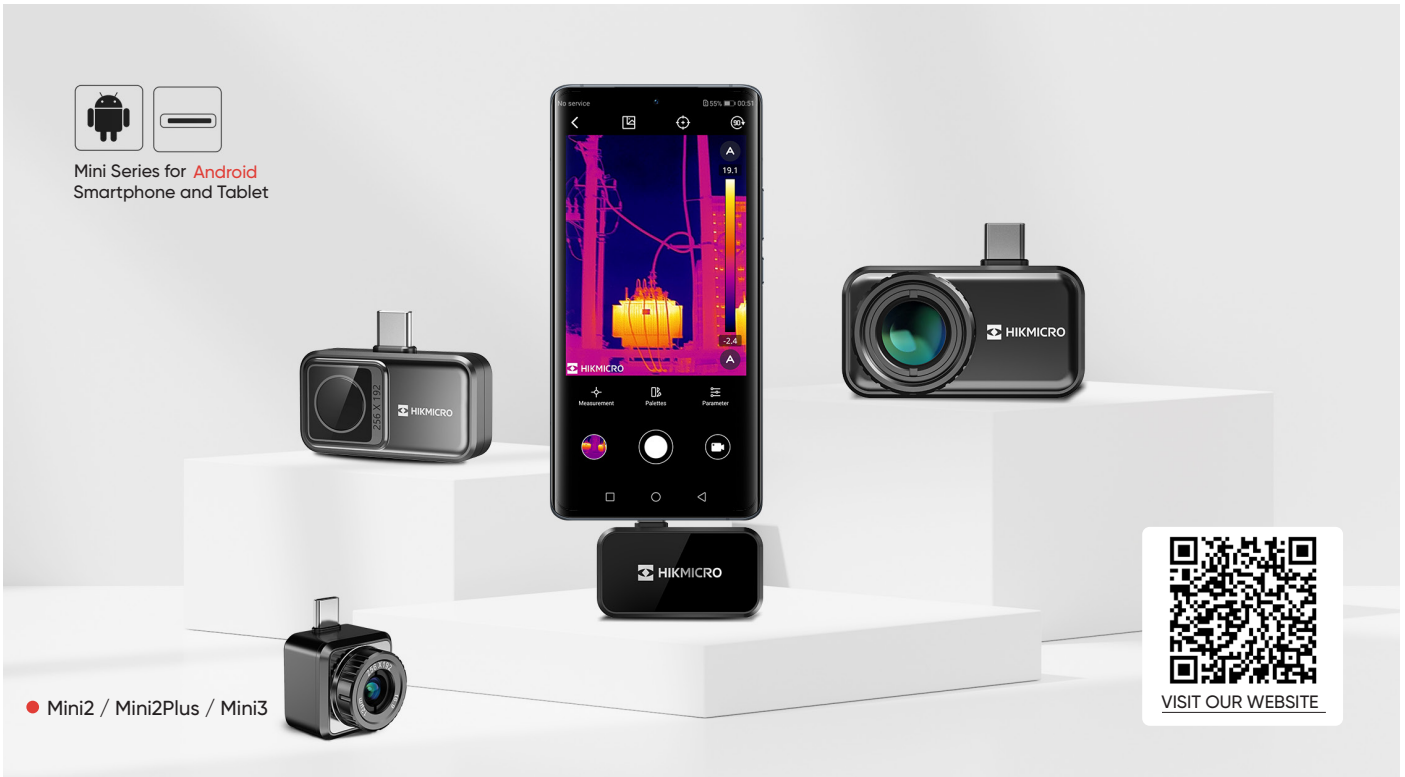


# MINI SERIES

Make your phone smarter with HIKMICRO Thermal



Mini Series for **Android** Smartphone and Tablet

● Mini2 / Mini2Plus / Mini3



## Multiple Product Options

The Mini series offers wide-angle and manual focus options. The Mini2Plus and Mini3 with manual focus lens provide a clear view of small objects such as electronic components or distant large objects like electrical or mechanical equipment from a safe distance. The Mini2 with its 50° wide-angle lens is ideal for quickly scanning walls, facades, and large objects.



## Superior Image Clarity & Smooth Video

With up to 384x288 IR resolution/110,592 pixels and thermal sensitivity up to <math><0.03^{\circ}\text{C}</math> sensor, it provides higher definition images, and it is easier to spot subtle heat loss or gain in the electrical system not visible to the naked eye. Up to 50 Hz image refresh provides a smooth image and video while panning across scenes or viewing moving items.



## Professional Viewer APP

Compatible with our free HIKMICRO Viewer APP for Android (Type-C) smartphones or tablets. It provides a user-friendly user interface and powerful temperature measurement and analysis functions, including Infrared/Fusion Image Mode, 15 Color Palettes, 9 measurement areas, and image share.



## User-Friendly Experience

Instantly attaches to your Android smartphone or tablet and is ready to go in seconds. The HIKMICRO Mini series is battery-free so you'll never need to charge it up or find a charger cable. It's powered by your phone, designed to run on very little power to maximize your mobile device run time, and ready whenever you are.



## Portable yet Durable

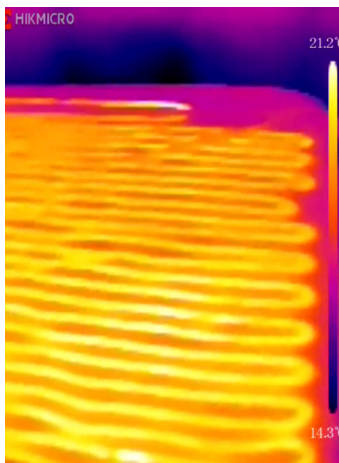
Designed for where you work, live, or relax. It'll fit in your pocket, tool bag, or anywhere convenient for quick and easy access. With IP40-rated aluminum alloy housings, pass strict drop tests up to 1 meter (3.3 feet), allowing you to work with confidence in most work environments.



## Multiple Practical Accessories

A 40 cm (15.75 in) extending cord connects between your device and the camera allowing remote viewing, and inspection through narrow, confined openings, or difficult-to-reach places. Also included is an 18 mm extended connector to accommodate smartphones or tablets in a protective case. A protective case is provided for storing your camera and keeping it free of scratches.

## APPLICATIONS



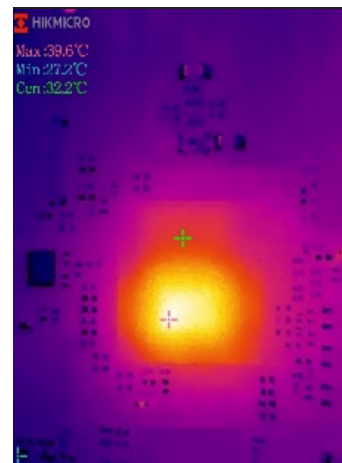
Home Inspection



Electrical Fuse



Electrical Inspection



PCB Board Detection

## WHAT'S IN THE BOX

1 Mini2

---

2 Mini2plus

---

3 Mini3

+

- Thermal Imager
- Protective Case
- Quick Start Guide
- Extension Cord
- USB Adaptor

Model No		Mini2	Mini2Plus	Mini3
Infrared Image	IR Resolution	256 × 192 (49,152 pixels)		384 × 288 (110,592 pixels)
	NETD	< 40 mK (@ 25 °C, F#=1.0)		< 30 mK (@ 25 °C, F#=1.0)
	Image Frequency	25 Hz		
	Field of View (FOV)	50° × 37.5°	25° × 18.8°	26° × 19°
	Focus Mode	Focus Free	Manual Focus	Manual Focus
Measurement and Analysis	Object Temperature Range	-20 °C to 350 °C (-4°F to 662°F)		-20°C to 650°C(-4°F to 1202°F)
	Accuracy	Max (±2°C/3.6°F, ±2%), applicable 60 sec after start-up when the ambient temperature 15°C to 35°C (59°F to 95°F) and object temperature above 0°C (32°F)		
	Measurement Tools	Center Spot, Hot Spot, Cold Spot User-definable: 3 spots, 1 line, and 3 rectangles.		
General	Weight	Approx. 20 g (0.044 lb)	Approx. 26 g (0.057 lb)	Approx. 45 g (0.099 lb)
	Dimension	42 × 22.5 × 11.2 mm (1.38 × 0.74 × 0.37 in)	26.6 × 26.6 × 24 mm (1.05 × 1.05 × 0.95 in)	47.6 × 26 × 26.59 mm (1.87 × 1.02 × 1.05 in)