

# AI56

For Finding Compressed Gas Leaks And Detecting Partial Discharge



## Low-noise MEMS Microphones and Adjustable Bandwidth

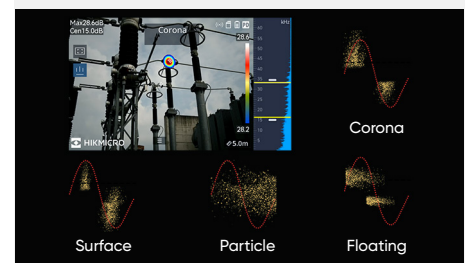
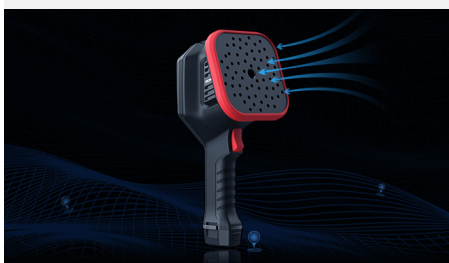
With 64 Low-noise MEMS microphones and an adjustable bandwidth range from 2 kHz to 65 kHz. The AI56 provides an easy and effective way to locate gas leak detection and partial discharge from high-voltage systems.

## Real-time Display of Leakage Data

The AI56 offers real-time estimated leak rate, leak cost, and leak level for gas leak detection. AI56 can filter noise to "visualize" sound with large 4.3" LCD touch screen even in noisy environments.

## 4 Types of Partial Discharges

AI56 is able to identify corona, floating, surface, and particle discharges, and exclude background noise in the scene. Knowing the type and severity of the discharge enables the facility to schedule maintenance to minimize failures and downtime.



## Analyzer Acoustic

Analyzer Acoustic software allows you to analyze and create reports based on field inspection images.



## Rugged and Portable

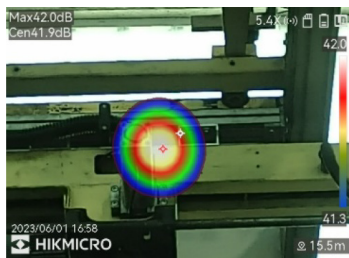
Convenient one-handed operation makes the AI56 easy to manage and find/document issues fast.



## Fully Document your Findings

Capture 5MP visual images with sound or partial discharge overlay. Add text or voice comments to complete your reporting quickly.

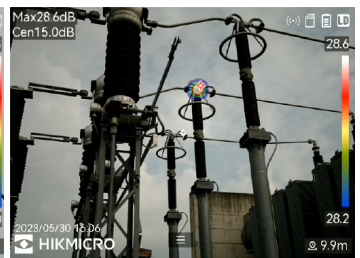
## APPLICATIONS



Gas Leak Detection



Partial Discharge Detection



## WHAT'S IN THE BOX



- Acoustic Imaging Camera (x1)
- Battery (x3)
- Charging Base (x1)
- Calibration Certificate (x1)
- Power Adapter (x1)
- Adapter (x4)
- Hand Strap (x1)
- USB Cable (x1)
- HDMI Cable (x1)
- SD Card (x1)
- MIC Protective Case (x1)
- Accessories Bag (x1)
- Quick Start Guide (x1)
- Carrying Case (x1)

Model No		AI56
Acoustic	Number of Microphones	64 low-noise MEMS microphones
	Bandwidth	0 kHz to 96 kHz, adjustable range MEMS sampling frequency: 192 kHz
	Distance	0.3m~100m (0.98 ft~328 ft)
	Sound Intensity Display	Peak Point
	Acoustic Image Frame Rate	25 fps
	Leak Rate	>0.008 l/min @ 6 bar from 0.5m (1.64 ft) >0.013 l/min @ 5 bar from 1 m (3.28 ft)
	Dynamic Range	Low Limit: <-15dB High Limit: >120dB
	Discharge Detection	Automatic detection 50 / 60 Hz
	Discharge Type	Corona Discharge, Particle Discharge, Floating Discharge, Surface Discharge
Image Display	Camera FOV	50.2°× 35.4°
	Display	800 × 480 Resolution, 4.3" LCD Touch Screen
	Digital Zoom	1.0x to 8.0x continuous
General	Annotations	Voice note: max. 60 seconds; Text note: max. 200 characters
	Battery Operating Time	3 batteries, 3.5hrs/battery runtime
	Working Temperature Range	-20 °C to 50 °C (-4 °F to 122 °F)