

FT31

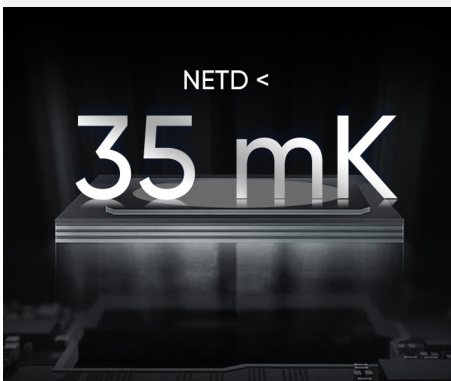
High-performance Thermal Camera For Observing In Total Darkness And Smoke.



High-Performance Thermal Camera

High Image Quality

Features a highly sensitive (NETD < 35 mK) VOx detector, along with ODE(Object Details Enhancement) to provide clear thermal images.



60 Hz Fast Image Frequency

60 Hz fast image frequency delivers smooth video while panning across scenes or viewing moving targets.

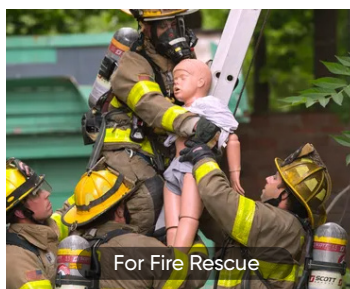


Rugged & Durable Design

IP67 rated for protection against water and dust. Featuring 2-meter (6.56ft) drop protection, suitable for harsh environment.



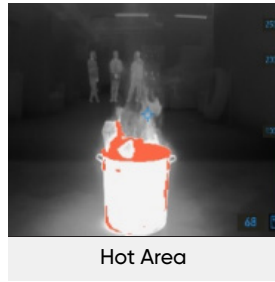
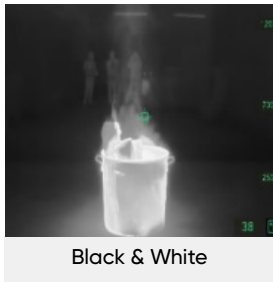
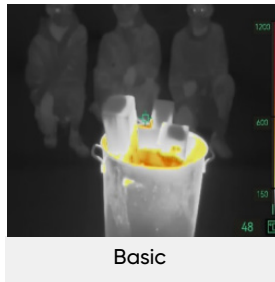
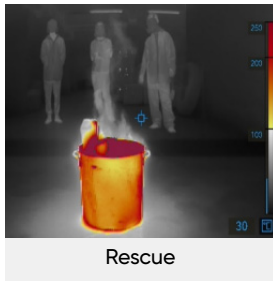
For Observing In Total Darkness And Smoke



Working Temperature Range:

- 20°C to 50°C (-4°F to 122°F);
- 80°C (176°F), 40min;
- 150°C (302°F), 15min;
- 260°C (500°F), 7min.

8 Color Palettes Give Different Image Display Options



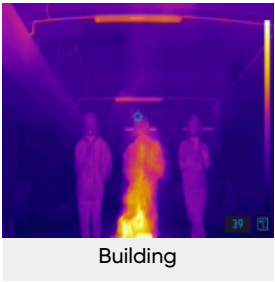
For scenes with higher background temps where open flames are present, particularly in structural fires.

For use with lower temperature situations, such as initial rescue efforts after traffic accidents, searches in wooded areas, etc.

For initial fire attack and rescue operations; colors represent temperature.

Same representations of temperature as the Basic mode, but in grayscale.

Used for finding hotspots. The hottest 20% of the scene is colored red.



What's In The Box

- Thermal Imager
- Neck Strap
- Lanyard
- Retractable Lanyard
- Interchangeable and Rechargeable Li-ion Batteries
- Power Supply for Battery Charger
- Two-bay Battery Charger
- International Use Plugs (US/EU/UK/AU) for Power Supply
- USB 2.0 A to USB Type-C Cable
- Hard Carrying Case
- Calibration Certificate
- Quick Start Guide

Basic Parameters		FT31
Infrared Image	IR Resolution	384 x 288 (110,592 pixels)
	NETD	< 35 mK (@ 25°C, F#=1.0)
	Image Frequency	60 Hz
	Field of View (FOV)	54.1°x40.2°
	Min. Focusing Distance	1 m (3.28 ft)
	Focus Mode	Focus Free
Image Display	Display	800 x 480 Resolution, 4.3" LCD Screen
	Color Palettes	Basic, Black Hot, White Hot, Fire Detection, Rescue, Hot Area, Cold Area, Building
Measurement and Analysis	Object Temperature Range	-20°C to 1200°C (-4°F to 2192°F)
	Accuracy	Max. (± 2°C/3.6°F, ± 2%), for ambient temperature 15°C to 35°C (59°F to 95°F) and object temperature above 0°C (32°F)
General	Battery Type	Interchangeable and rechargeable Li-ion battery
	Protection Level	IP67
	Drop Test Height	2 m (6.56 ft)
	Working Temperature Range	-20°C to 50°C (-4°F to 122°F) 80°C(176°F), 40min 150°C(302°F), 15min 260°C(500°F), 7min
	Weight	Approx. 1022g (2.25 lb)