

# MINI2 SERIES

Make your phone smarter with HIKMICRO Thermal

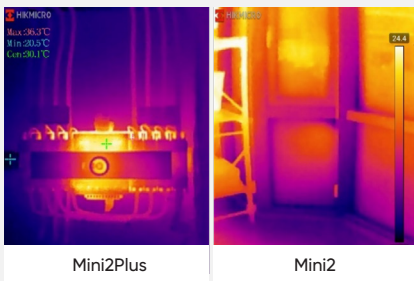


Mini Series for **Android** Smartphone and Tablet

● Mini2 / Mini2Plus

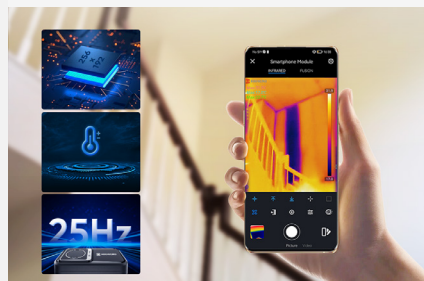
## Multiple Product Options

The Mini2 series offers wide-angle and manual focus options. The Mini2Plus with manual focus lens provides a clear view of small objects such as electronic components or distant larger objects like electrical or mechanical equipment from a safe distance. The Mini2 with its 50° wide-angle lens is ideal for quickly scanning walls, facades, and large objects.



## Superior Image Clarity & Smooth Video

With 256x192 IR resolution/49,152 pixels and thermal sensitivity <math><0.04^{\circ}\text{C}</math> sensor, it provides higher-definition images, and it is easier to spot subtle heat loss or gain in the electrical system not visible to the naked eye. 25 Hz image refresh provides a smooth image and video while panning across scenes or viewing moving items.



## Professional Viewer APP

Compatible with our free HIKMICRO Viewer APP for Android (Type-C) smartphones or tablets. It provides a user-friendly user interface and powerful temperature measurement and analysis functions, including Infrared/Fusion Image Mode, 15 Color Palettes, 9 measurement areas, and image share.



## User-Friendly Experience

Instantly attaches to your Android smartphone or tablet and is ready to go in seconds. The HIKMICRO Mini2 series is battery-free so you'll never need to charge it up or find a charger cable. It's powered by your phone, designed to run on very little power to maximize your mobile device run time, and ready whenever you are.



## Portable yet Durable

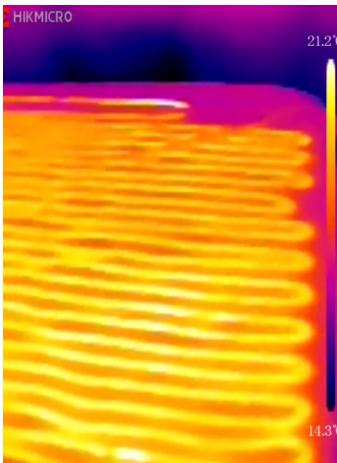
Designed for where you work, live, or relax. It'll fit in your pocket, tool bag, or anywhere convenient for quick and easy access. With IP40-rated aluminum alloy housings, pass strict drop tests up to 1 meter (3.3 feet), allowing you to work with confidence in most work environments.



## Multiple Practical Accessories

A 40 cm (15.75 in) extending cord connects between your device and the camera allowing remote viewing, and inspection through narrow, confined openings, or difficult-to-reach places. Also included is an 18 mm extended connector to accommodate smartphones or tablets in a protective case. A protective case is provided for storing your camera and keeping it free of scratches.

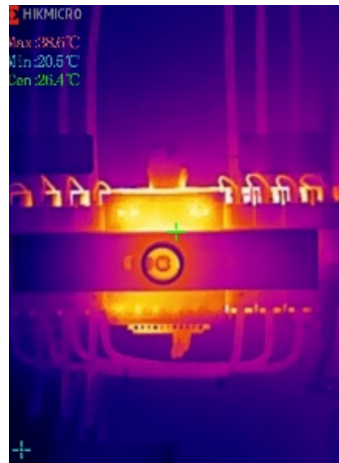
## APPLICATIONS



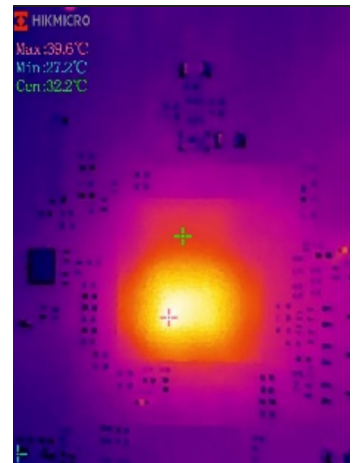
Home Inspection



Automotive Inspection

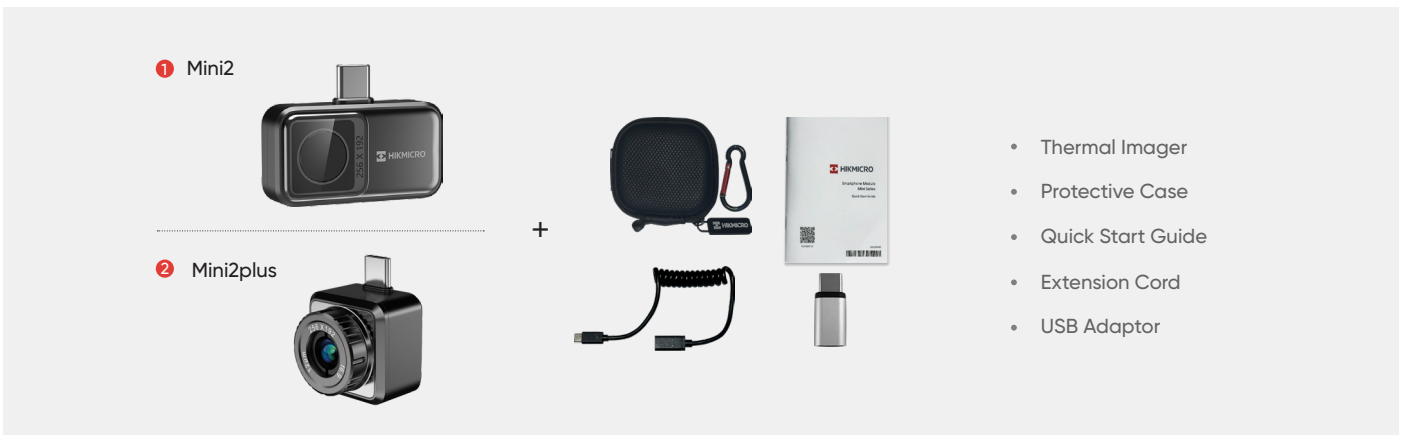


Electrical Inspection



PCB Board Detection

## WHAT'S IN THE BOX



Model No		Mini2	Mini2Plus
Infrared Image	IR Resolution	256 × 192 (49,152 pixels)	
	NETD	< 40 mK (@ 25 °C, F#=1.0)	
	Image Frequency	25 Hz	
	Field of View (FOV)	50° × 37.5°	25° × 18.8°
	Focus Mode	Focus Free	Manual Focus
Measurement and Analysis	Object Temperature Range	-20 °C to 350 °C (-4°F to 662°F)	
	Accuracy	Max (±2°C/3.6°F, ±2%), applicable 60 sec after start-up when the ambient temperature 15°C to 35°C (59°F to 95°F) and object temperature above 0°C (32°F)	
	Measurement Tools	Center Spot, Hot Spot, Cold Spot User-definable: 3 spots, 1 line, and 3 rectangles.	
General	Weight	Approx. 20 g (0.044 lb)	Approx. 24 g (0.053 lb)
	Dimension	42 x 22.5 x 11.2 mm (1.38 x 0.74 x 0.37 in)	26.6 × 26.6 × 25 mm (1.05 × 1.05 × 0.98 in)